



201-0415:7

www.srt-marine.com  
support@srt-marine.com

# AIS Coast Station

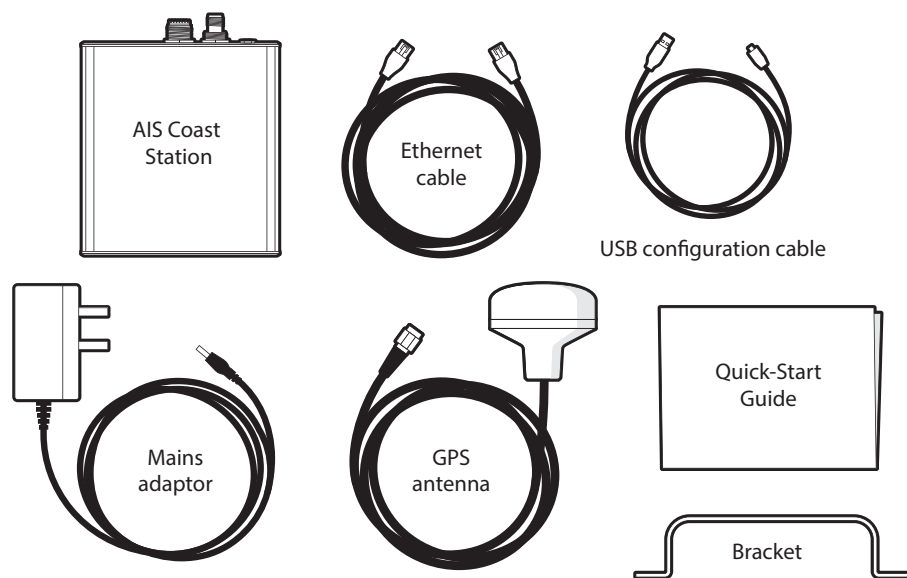
## QUICK-START GUIDE

Model number: CS100

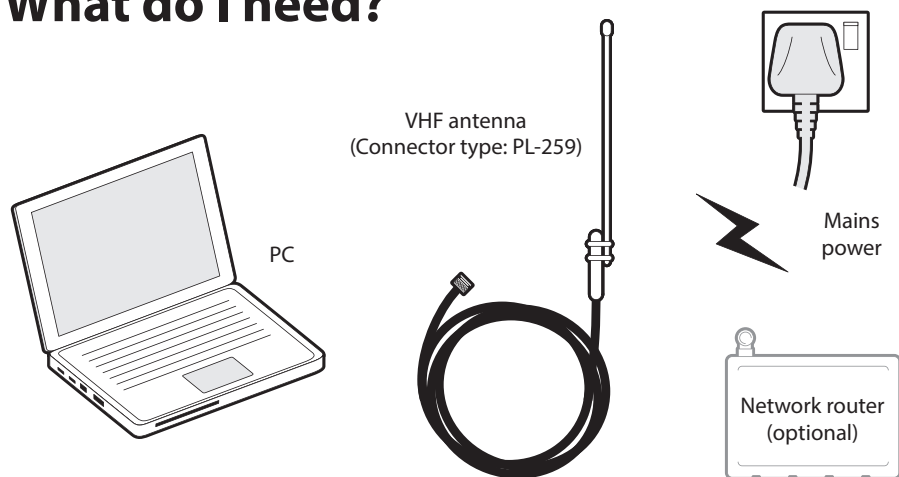


For full instructions of how to install and use your AIS Coast Station please refer to the Installation and Operation Manual.

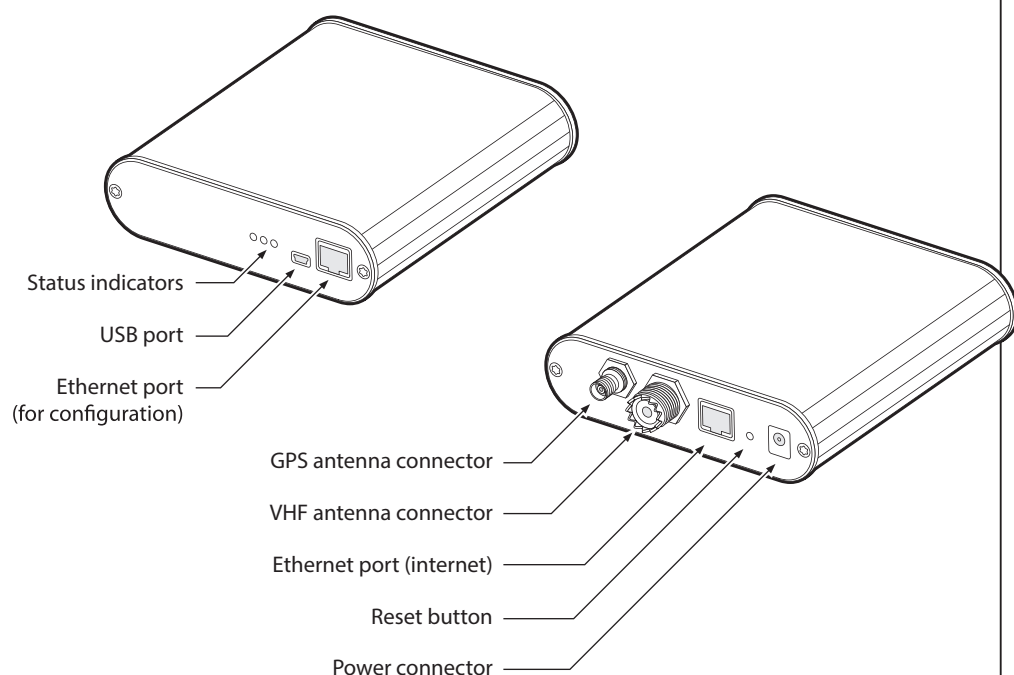
## What's in the box?



## What do I need?

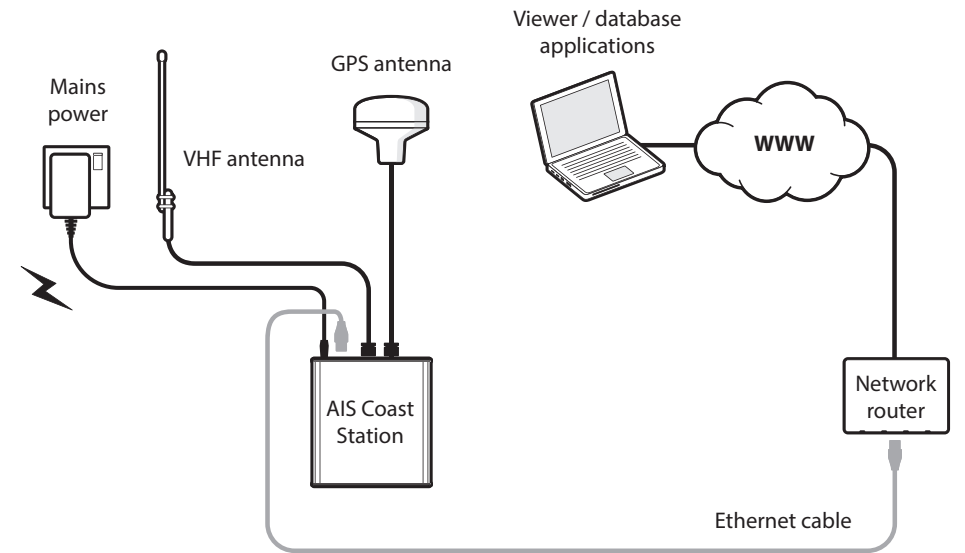


## Coast Station connections

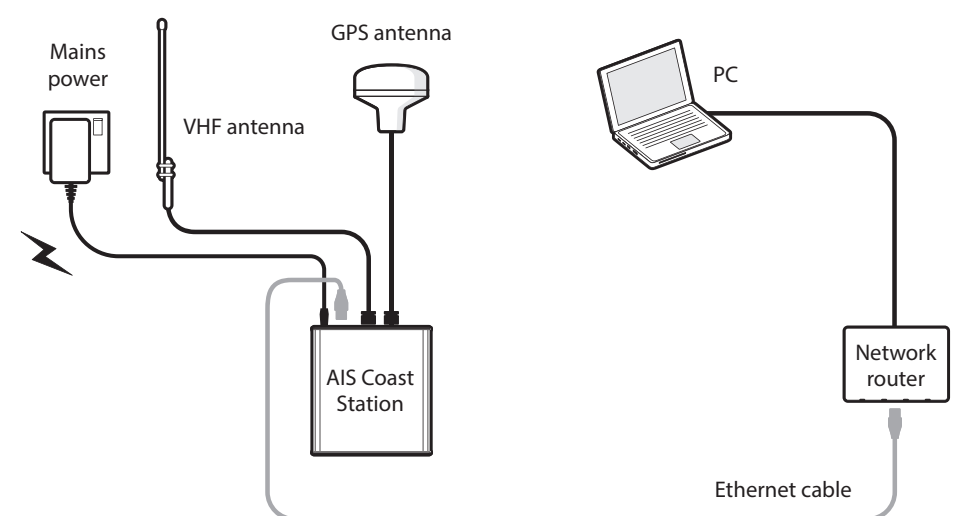


## Installation

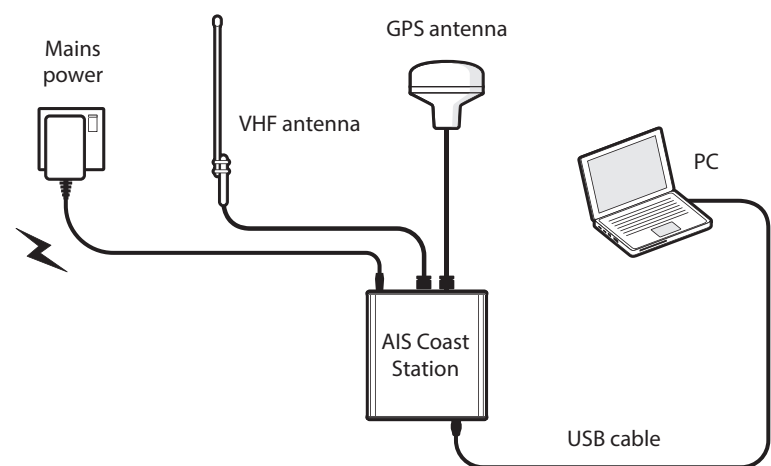
### 1. Networked via internet



### 2. PC connected directly to router



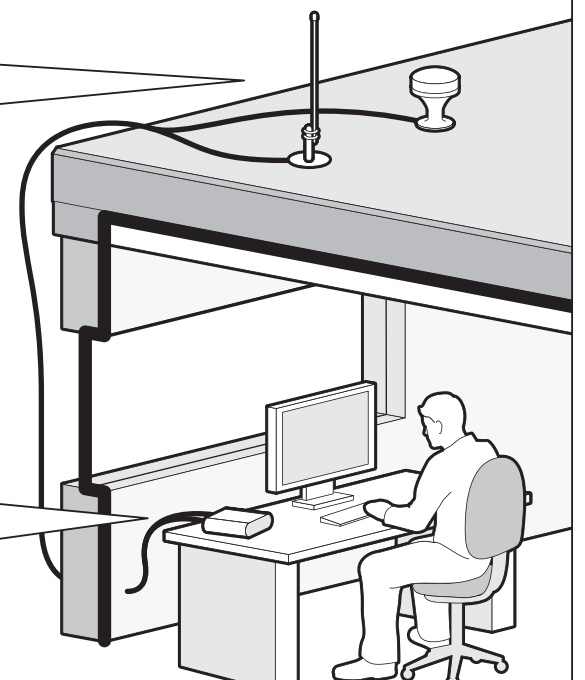
### 3. PC connected directly to Coast Station via USB cable



## Important information!

Mount the GPS and VHF antennas in an external elevated location

The Coast Station must be installed in a dry indoors environment

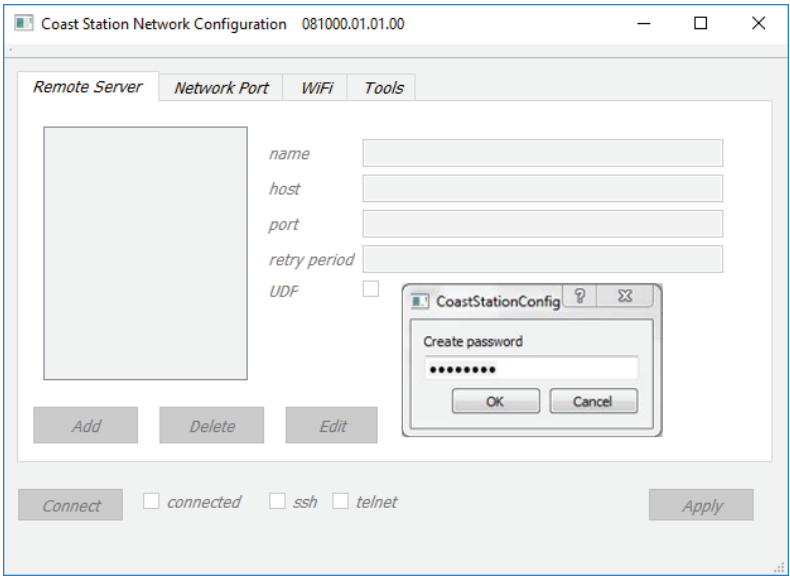
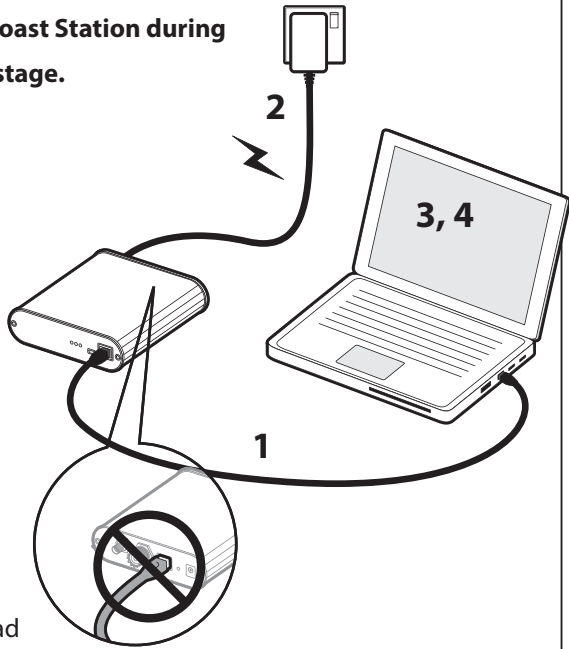


# Network configuration



There should be no Ethernet connection at the rear of the Coast Station during the configuration stage.

1. Connect the Coast Station to the PC via the front CONFIG port.
2. Connect the Coast Station to mains power using the adaptor provided.
3. Contact your dealer to download the Network Configuration tool. Once it's downloaded, run the installer and then start the application.
4. Create / enter password. If the password has not been entered before (or the Coast Station has been reset) it will need to be created. The password cannot be 'password'.



### When using the Coast Station as a client:

Enter name, host, port, and retry period in the Remote Server tab.  
At default it will connect using TCP/IP, or tick the UDP box if you want it to connect using UDP.

### When using the Coast Station as a server:

Enter a 'hostname' so it can be identified on a network.  
At default it will operate in DHCP mode. Static mode requires an IP address, netmask, gateway, and DNS server address.  
Note that any clients connecting to the Coast Station will need to use port 5000.

Press the 'Apply' button to save the configuration.

# AIS configuration



AIS Configuration is only required if the Coast Station is to be used as an AIS AtoN. For Coast Stations operating as AIS receiving stations AIS configuration is not required.

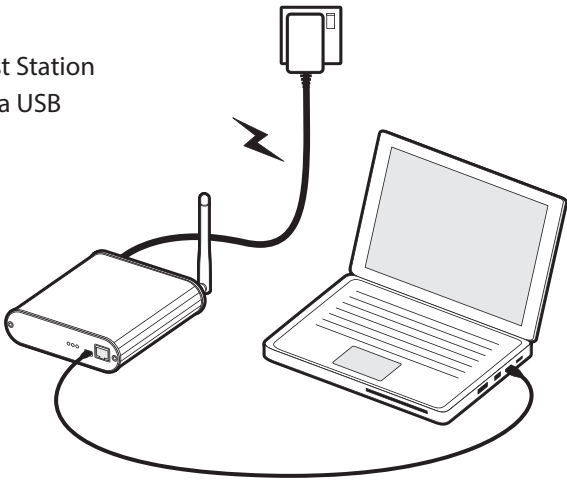


Refer to the user manual for detailed instructions of how to use proAtoN to configure your Coast Station as an AIS AtoN.



You will require an MMSI and appropriate license to operate Coast Station as an AIS AtoN.

Mains powered Coast Station connected to a PC via USB



1. Connect the Coast Station to mains power using the adaptor provided.
2. Connect the Coast Station to a PC using the USB cable provided.
3. Contact your dealer to download proAtoN, the AIS AtoN configuration tool.
4. Follow the on-screen instructions.
5. Launch proAtoN from the start menu.
6. Connect Coast Station to the PC via USB.
7. Configure Coast Station as an AIS AtoN.

